

PART OF S.W. 1/4 OF SEC. 9, T.5N., R.1W., S.L.B. & M.

48

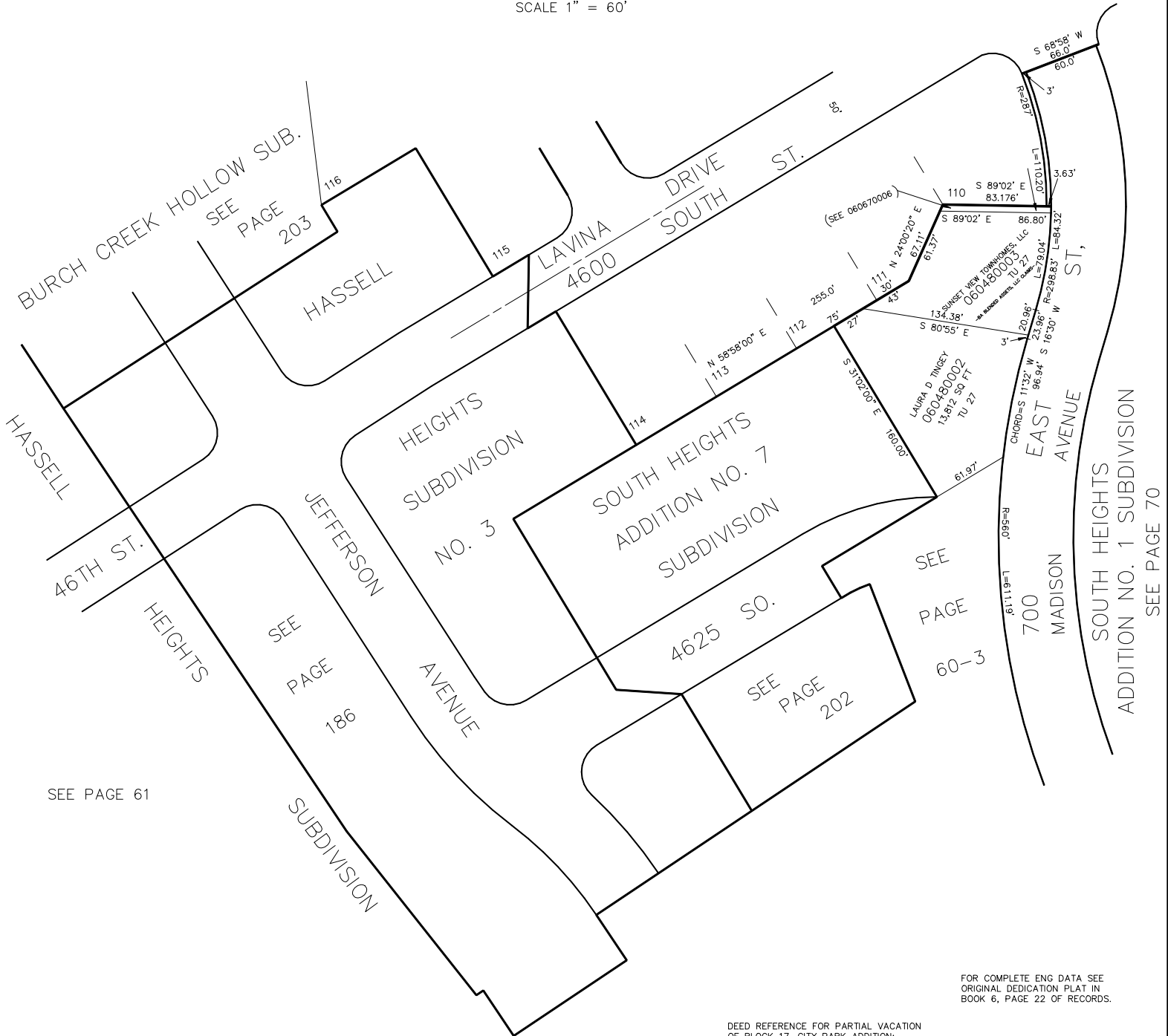
# CITY PARK ADDITION

PAGE 49 OMITTED

TAXING UNIT: 27

PART OF BLOCK 17  
IN SOUTH OGDEN CITY

SCALE 1" = 60'



SEE PAGE 61

DEED REFERENCE FOR PARTIAL VACATION  
OF BLOCK 17, CITY PARK ADDITION:  
BOOK 376, PAGE 414 &  
BOOK 860, PAGE 256.

FOR COMPLETE ENG DATA SEE  
ORIGINAL DEDICATION PLAT IN  
BOOK 6, PAGE 22 OF RECORDS.